

# Rex the Rhinoceros Beetle Activity Pack

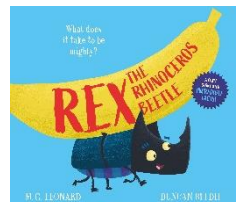
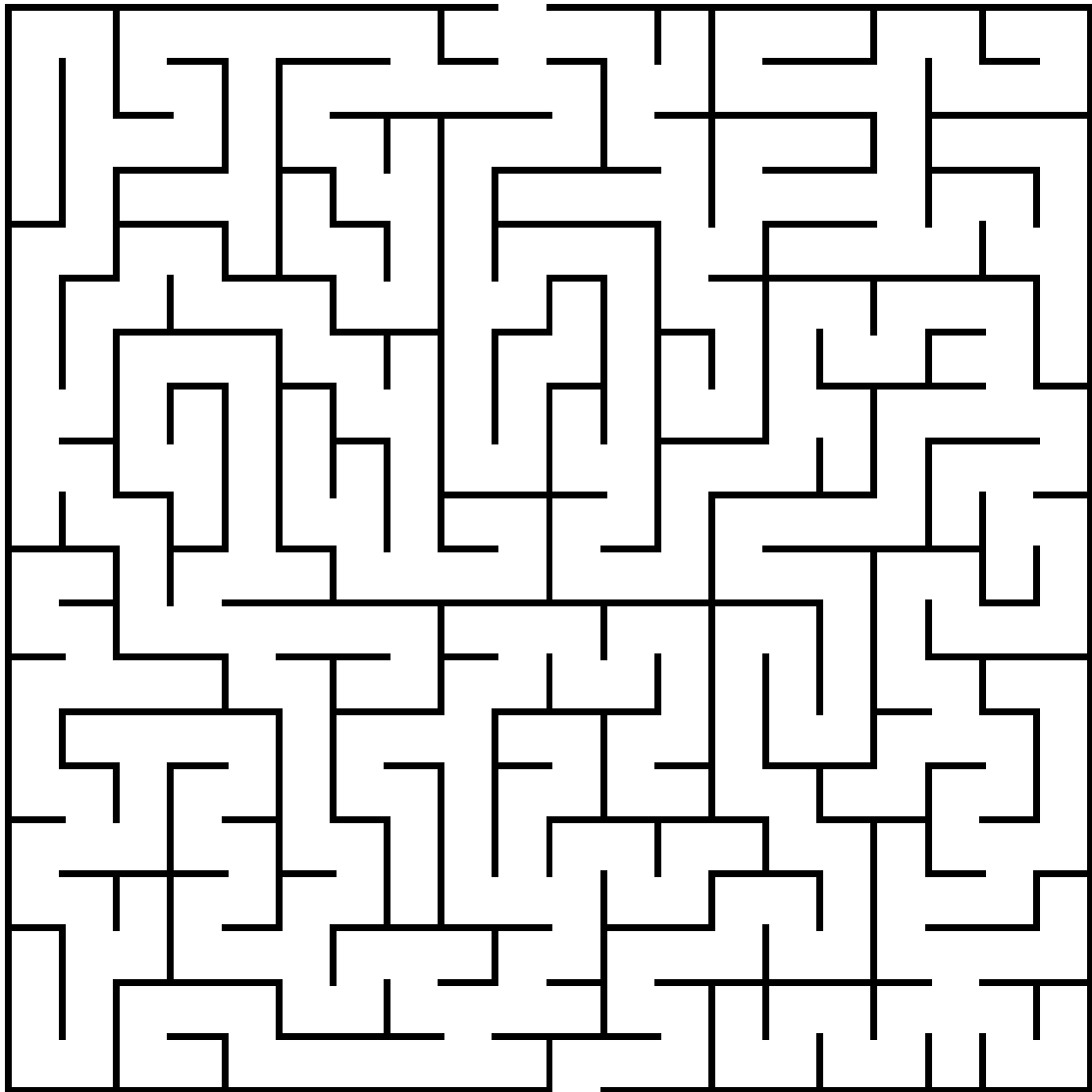
**REX** THE RHINOCEROS  
BEETLE





# Garden Maze!

Help Rex make it through the maze and back to Buster!



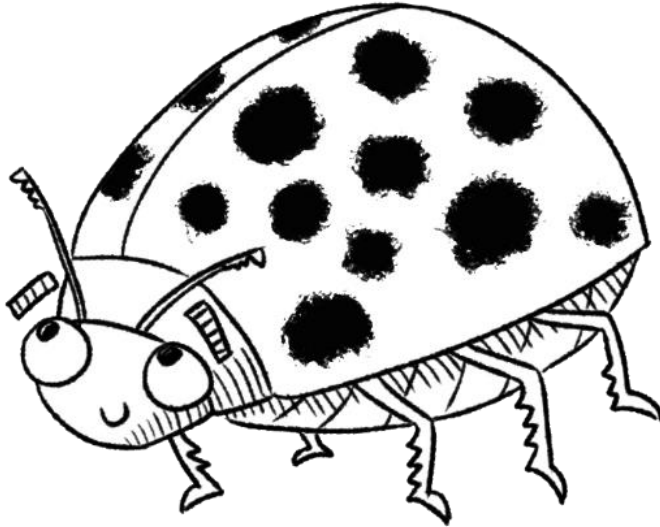


# Colouring In!

Can you colour in the following beetles?

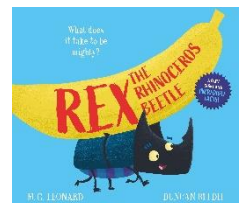
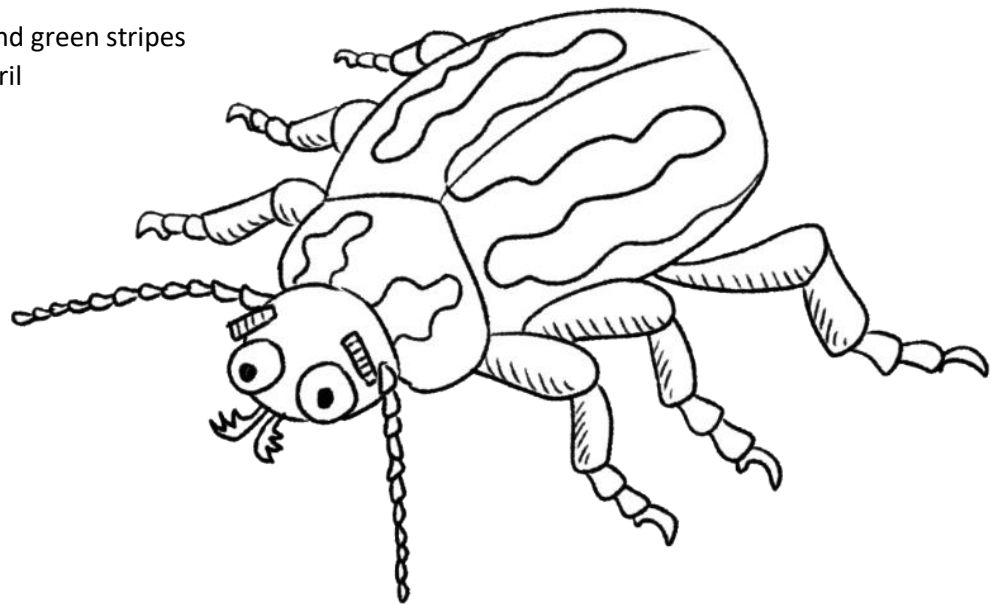
## 22-spot Ladybird

- Bright yellow
- 22 black round spots
- Found April-August



## Rosemary Beetle

- Very shiny
- Metallic purple and green stripes
- Found August-April

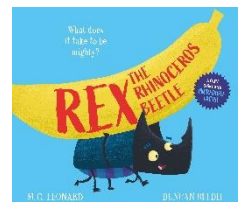
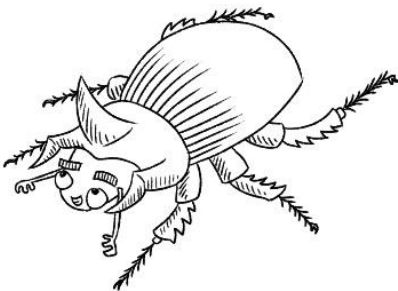
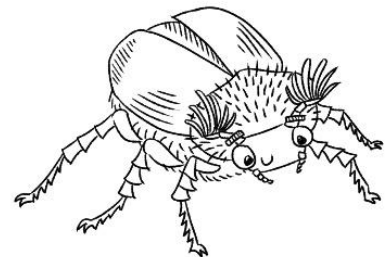
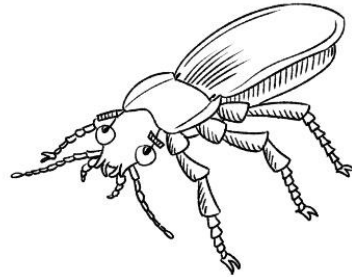
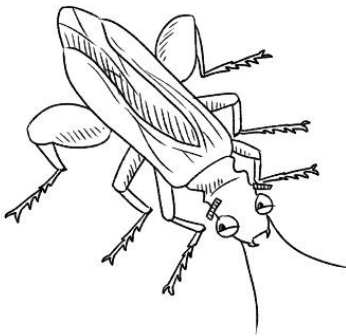
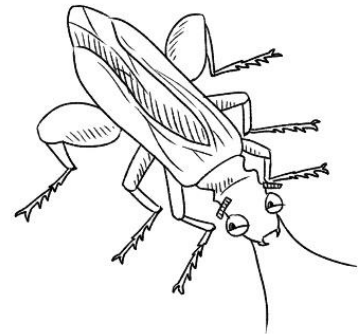
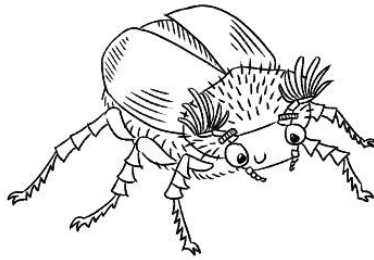
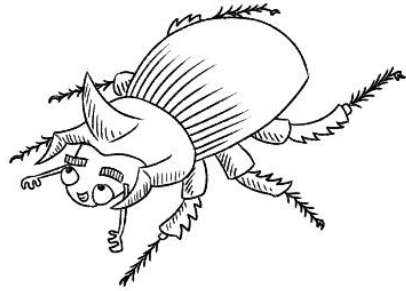
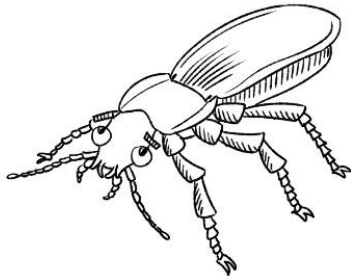




# Match the Beetles!

There are a lot of beetles in the garden today.

Can you match up the pairs?

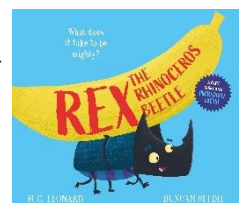




# Draw Your Own Beetle!

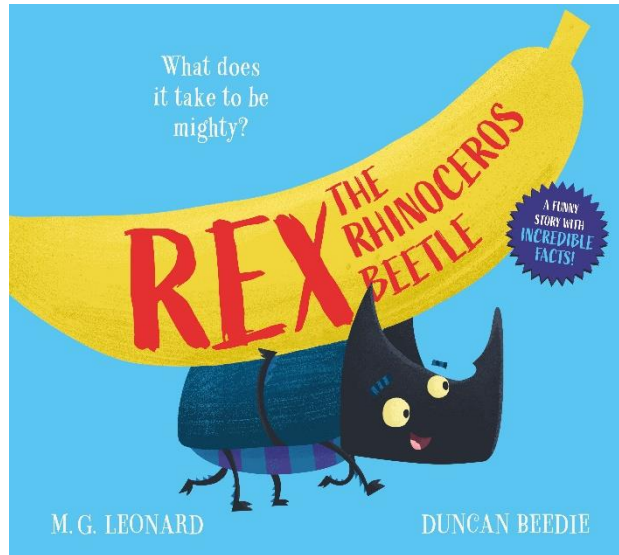
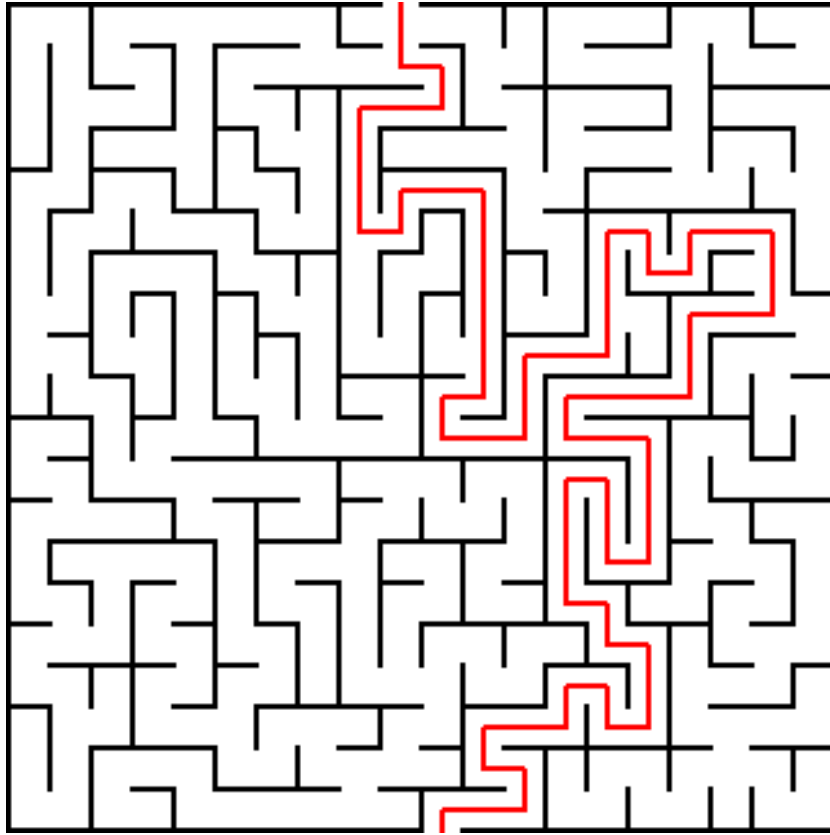
Beetles come in all different shapes and sizes. They have different sized antennae, some have little horns, some are striped, some have wings. Draw your ultimate beetle below!

Drawn by: \_\_\_\_\_





# Answer Sheet



How many beetles can you spot?  
Colour them in as you find them!

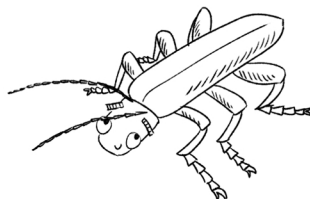


# Garden Scavenger Hunt



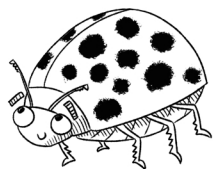
## Minotaur Beetle

- Glossy black
- Three bull-like horns
- Found September-July



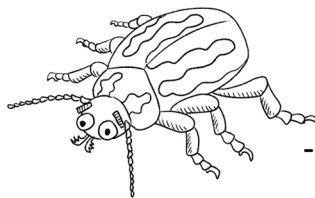
## Soldier Beetle

- Bright orangey-red
- Narrow body and long antennae
- Found June-August



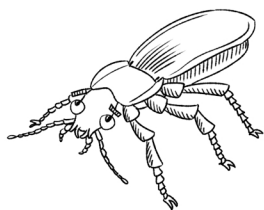
## 22-spot Ladybird

- Bright yellow
- 22 black round spots
- Found April-August



## Rosemary Beetle

- Very shiny
- Metallic purple and green stripes
- Found August-April



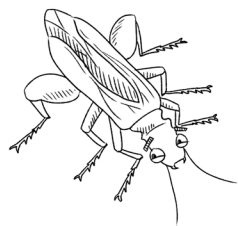
## Violet Ground Beetle

- Metallic purple sheen
- Rest under logs and stones
- Found March-October



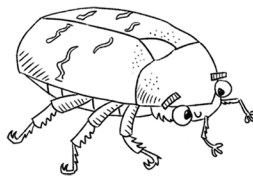
## Bloody-Nosed Beetle

- Black with blueish sheen
- Large, round and flightless
- Found April-September



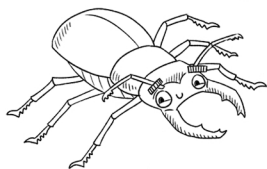
## Thick-legged Flower Beetle

- Metallic green
- Usually seen on flowers
- Found April-September



## Rose Chafer

- Metallic coppery-green
- White streaks on wing cases
- Found May-October



## Stag Beetle

- Reddish-brown body
- Massive antler-like jaws
- Found May-August



## May Bug

- Fan-shaped antennae
- Found on shrubs
- Found May-July

Text copyright © 2020 M. G. Leonard.  
Illustrations copyright © 2020 Duncan Beedie



Explore your garden  
using your senses!

Tick off each item as  
you find it!

# Garden Scavenger Hunt



## Sound

- Find something that crunches
- Find something that snaps
- Find an animal that makes a noise
- Find a bird that chirps
- Find something that buzzes

## Smell

- Find a flower that gives a scent
- Find something that smells good



## Sight

- Find something red
- Find something patterned
- Find something small
- Find something long
- Find something round

## Touch

- Find something soft
- Find something pointy
- Find something wet
- Find something prickly
- Find something cold

Text copyright © 2020 M. G. Leonard.  
Illustrations copyright © 2020 Duncan Beedie

